





IVR 97 - PROLUNGA




 Prolunga di manovra per isolamento termico

 Handle extension for thermal insulation

 Verlängerung für Wärmedämmung

 Rallonge fixe pour isolation thermique

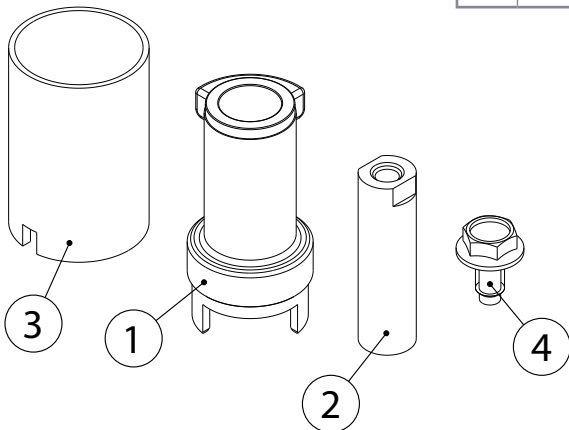
 Удлинитель ручки для термоизоляции



IMPIEGHI: Permette il rivestimento con materiale da coibentazione contro la dispersione del calore ed a temperature inferiori a -10°C .

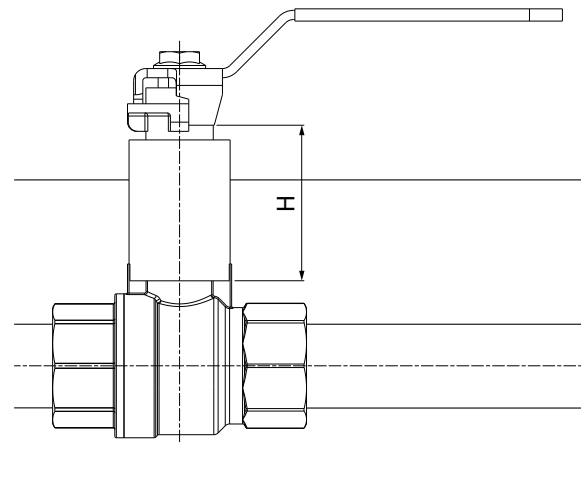
APPLICATIONS: It allows the covering with insulation material in order to avoid heat dispersions at temperatures lower than -10°C .

N	DENOMINAZIONE PART NAME	MATERIALE MATERIAL	TRATTAMENTO TREATMENT
1	Prolunga - Extension	Ottone - Brass CW617N - UNI EN 12165	Nichelata - Nickel Plated
2	Asta - Stem	Ottone - Brass CW614N - UNI EN 12164	
3	Guaina esterna - External Cover	PP	
4	Vite - Screw	Acciaio - Steel	Zincata - Zinc Plated



DIMENSIONI - DIMENSIONS (mm)

PROLUNGA EXTENSION	CODICE CODE	H
M	109702030	42
1a - T1a	109705030 - 109705070	44
2a - T2a	109710030 - 109710070	52
3a - T3a	109715030 - 109715070	60
4a - T4a	109720010 - 109720070	78
5a	109725010	86



Scelta delle misure - Sizes choice

DN	Art. 45	Art. 46	Art. 47	Art. 48	Art. 70	Art. 71	Art. 100	Art. 101
1/4"	M	M	--	--	T1a	T1a	--	--
3/8"	M	M	--	M	T1a	T1a	M	M
1/2"	1a	1a	1a	1a	T2a	T2a	1a	1a
3/4"	1a	1a	1a	1a	T2a	T2a	1a	1a
1"	2a	2a	2a	2a	T3a	T3a	2a	2a
1"1/4	2a	2a	--	2a	T3a	T3a	2a	2a
1"1/2	3a	3a	--	3a	T4a	T4a	3a	3a
2"	3a	3a	--	3a	T4a	T4a	3a	3a
2"1/2	5a	--	--	--	--	--	--	--
3"	5a	--	--	--	--	--	--	--
4"	5a	--	--	--	--	--	--	--

DN	Art. 918	Art. 919	Art. 920	Art. 935	Art. 936	Art. 954	Art. 956	Art. 957
1/4"	--	--	--	--	--	M	M	M
3/8"	--	--	--	--	--	M	M	M
1/2"	M	M	M	M	M	M	M	M
3/4"	M	M	M	M	M	M	M	M
1"	1a	1a	--	1a	1a	1a	1a	1a
1"1/4	1a	1a	--	1a	1a	1a	1a	1a
1"1/2	2a	2a	--	2a	2a	2a	2a	2a
2"	2a	2a	--	2a	2a	2a	2a	2a
2"1/2	3a	--	--	--	--	4a	--	--
3"	4a	--	--	--	--	4a	--	--
4"	4a	--	--	--	--	5a	--	--