

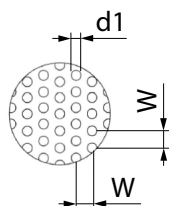
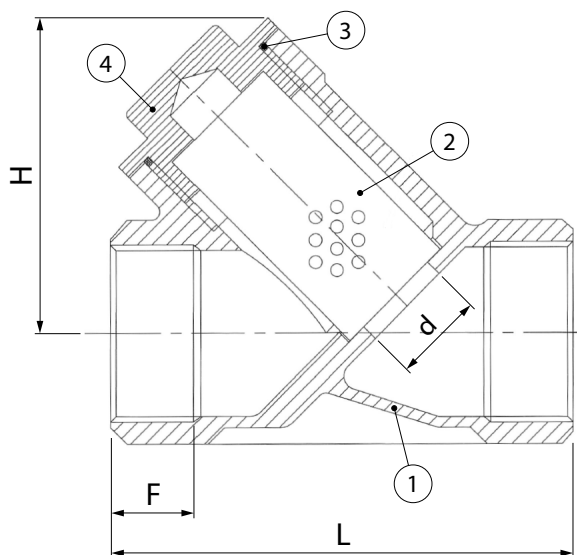
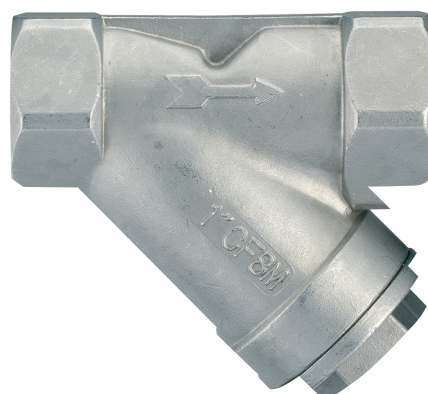
Filtro a Y a passaggio totale in acciaio inox AISI 316
Attacchi F/F

AISI 316 stainless steel full bore Y filter
Threaded ends F/F

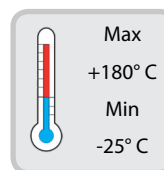
Y filter aus Edelstahl AISI 316
IG/IG

Filtre à tamis en Y en acier inox AISI 316
Passage intégral - Fixations F/F

Полнопроходной фильтр "Y" из нержавеющей стали - Соединения В/В



ITEM	PART NAME	MATERIAL	QTY
1	Corpo - Body	CF8M	1
2	Filtro - Filter	SS316	1
3	Guarnizione Corpo - Body Gasket	PTFE	1
4	Tappo - Plug	CF8M	1



DIMENSIONI - DIMENSIONS (mm)

DN	d	L	F	H	W	d1
1/4"	10	64	15	43	2	1
3/8"	12	64	15	43	2	1
1/2"	15	64	15	45	2	1
3/4"	20	80	16	52	2	1
1"	25	90	16	68	2	1
1"1/4	32	106	22	70	2	1
1"1/2	38	119	22	80	2	1
2"	50	140	26	98	2	1

PRESSIONE / TEMPERATURA - PRESSURE / TEMPERATURE

