



# IVR 287



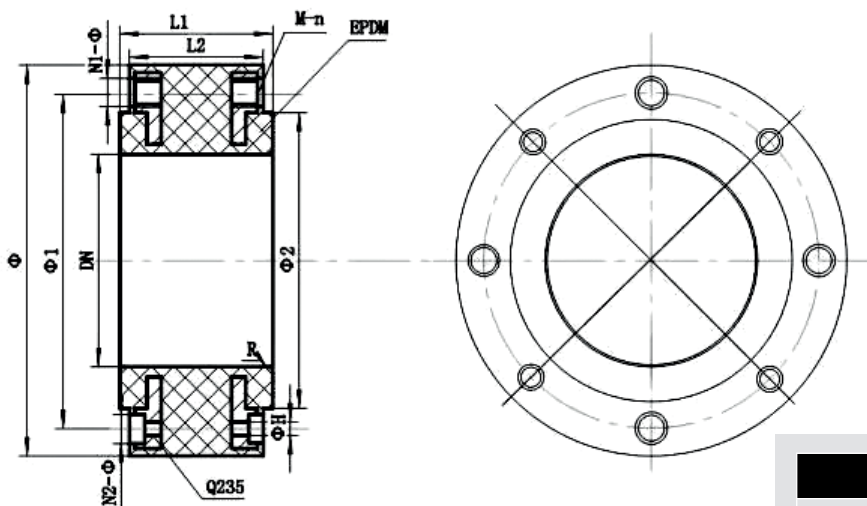
 Giunto in gomma piena EPDM - PN 10/16

 Solid rubber joint EPDM - PN 10/16

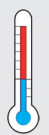
 Vollgummiverbindung EPDM - PN 10/16

 Joint en caoutchouc plein EPDM - PN 10/16

 Резиновый уплотнитель EPDM-PN 10/16



Size   
DN 20-DN 200 10 - 16 bar

 Max  
+115° C  
Min  
-15° C

IVR 287		CARATTERISTICHE FEATURES
Pressione esercizio Working pressure	PN 10 / PN 16	
Temperatura esercizio Design temperature	-15°C / +115°C	
Flange Flanges	EN1092	
Collaudi Tests	DM174	

ITEM	COMPONENTI PART NAME	MATERIALI MATERIALS
1	Corpo Body	EPDM
2	Flange Flanges	Acciaio al Carbonio Carbon steel
3	Vite Screw	Acciaio al Carbonio Carbon steel

SIZE		Φ	Φ1	Φ2	L1	L2	ΦH	R	PN 10	PN 16	W (kg)
DN	IN								M - N	M - N	
32	1" 1/4	143	100	77	70	64,4	10	3	4 - M16	4 - M16	3
40	1" 1/2	153	110	87	70	64,4	10	3	4 - M16	4 - M16	3,4
50	2"	168	125	101	70	64,4	10	3	4 - M16	4 - M16	4,5
65	2" 1/2	189	145	121	70	64,4	10	3	4 - M16	4 - M16	5,5
80	3"	204	160	137	70	64,4	10	3	4 - M16	4 - M16	6
100	4"	224	180	157	70	64,4	10	3	8 - M16	8 - M16	7
125	5"	254	210	187	70	64,4	10	3	8 - M16	8 - M16	8,7
150	6"	289	240	211	70	64,4	11	3	8 - M20	8 - M20	10,5